



Welcome to  
Beaumont Lodge  
Primary School  
Foundation Stage

Reception



## Welcome to Beaumont Lodge Reception Class

As your child's first experience of full time school we want to make this year an enjoyable and happy time for your child that will motivate them to become confident and enthusiastic learners for life. We want your child to Learn, Enjoy, Develop and Succeed through their Reception year and beyond.

### What happens in Foundation Stage?

#### Morning Routine

The reception children are welcomed at the door at **8:30am**. Please arrive promptly as lateness can be disruptive and means the children miss valuable learning time. The children will each have a peg in the cloakroom and space beneath (or nearby) for their shoes and wellie boots. A member of staff will support your child in finding their peg, hanging up their coat and putting their book bag onto their peg. The children will then check-in by finding their picture and attaching it to the dinner register to show if they are having packed lunch or school dinner (supported by an adult). They will then choose an activity to complete in the classroom.

Staff members are always available to talk to in the morning if you have any questions or concerns but if you would like a longer, more private conversation please book an appointment (with us directly or through the school office).

#### Home Time Routine

The children in reception class finish school at 3.00pm in line with the main school. Please pick up your child **promptly** from the foundation stage door at this time. We will send your child out to you. Once the door is closed you will need to go to the office to collect your child. If you are unable to pick up your child then they must be collected by:



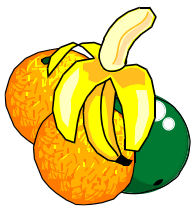
- A Parent or Carer known to the Foundation Stage staff.
- A person authorised by the child's Parent/Carer. The authorised person must be written on a permission form which is available near the classroom door.
- All people collecting children from school must be 18 years old or over.

Under no circumstances will your child be allowed to leave school without appropriate permission. Please do not hesitate to phone the school office if you think you may be late collecting your child.



## Active Learning in the Foundation Stage

We select different activities for children to play with and learn from both inside and out. Some activities will be changed every day, but most will be left out for longer periods to allow children to revisit them and extend their knowledge and skills. This is called continuous provision. Some of the toys, games and activities in the classroom will be 'child initiated' activities, meaning that your child can choose what he or she wants to play with. There will also be daily activities that are 'adult led' - this means there will be an adult working with the children. We plan all activities to develop the children's confidence and ability in the seven areas of learning and development.



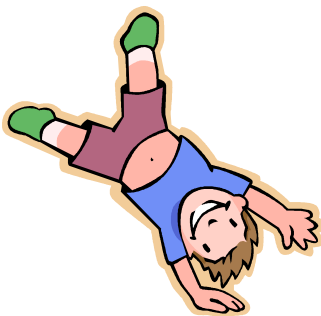
Every day we will share stories, sing songs, learn phonics, count and talk. All children will have the chance to have milk or water and toast and fruit everyday as a snack.

Children will have the opportunity to play inside and outside.

We will take the children outside even if it is raining or snowing so please make sure your child has their coat and wellies in school every day. Outdoor play is very important for your child's development as it gives them a chance to explore much more than they can in the confines of the classroom. It helps to build their confidence as they learn to explore, to solve problems and relate to one another. In addition to outdoor play, the children will take regular walks in the outdoor area within the school grounds and in the local area.



Each week we have time in the school hall to play ring games, use the big parachute and have PE lessons. PE kits will need to be worn for these lessons and any jewellery, including earrings, will need to be removed on this day.



We also have a weekly library session. During this time the children are allowed to choose a book to take home. Books must be returned every week for the children to be able to bring a new book home.



When it is your child's birthday we celebrate in class. You are welcome to bring a small sweet or chocolate in for children to share if you wish. Please make sure any food brought into school is nut free with all ingredients labelled. Unfortunately, we are unable to accept homemade goods.





## What are the seven areas of learning and development?

- **Prime areas of development** - These are the areas of development that build good foundations for future learning in all areas.



**Communication and Language Development (CLD)** - This area of development focuses on how your child communicates with others, their understanding of speech, language and listening skills.

**Physical Development (PD)** - This covers how your child moves and controls their own body, both in large movements (gross motor) such as running, jumping and climbing and small movements (fine motor) such as how they hold a pencil or use scissors or a knife and fork.



**Personal, Social and Emotional Development (PSED)** - This covers how your child works and plays in school, builds relationships with other children and adults and their attitude to learning and playing.

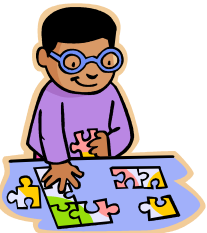


- **Specific areas of learning and development** - These are the specific areas of learning that build specialised skills.

**Literacy Development (LD)** - This involves children reading and listening to lots of different texts (stories, poems, non-fiction) and developing early reading and writing skills. Children will begin to link letters to the sounds they make and use these in their reading and writing.



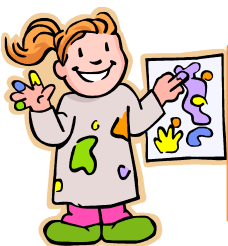
**Mathematical Development (MD)** - This area of learning will develop your child's understanding of numbers (including counting, ordering and recognising numbers), patterns and the beginnings of simple, practical addition and subtraction, doubling and halving.



**Understanding of the World (UW)** - This covers a wide range of skills including how your child investigates the world around them, how they construct and make models including maps, their understanding of how things change over time including learning about some historical figures and their understanding of the differences between themselves and others.



**Expressive Arts and Design (EAD)** - This area focuses on your child's imagination while they play with others or on their own, and supports the development of their skills and imagination in art, music and role play activities.





### Characteristics of Effective Teaching and Learning

These are the ways in which your child engages with other people and their environment - **Playing and exploring, Active learning, and Creating and thinking critically** - these characteristics underpin learning and development across all areas and support your child to remain an effective and motivated learner.

### Planning

When planning we consider the needs, interests and stages of development of each child then plan challenging and enjoyable learning experiences in all areas of learning and development.

Our areas of learning are implemented through planned, purposeful play and a mix of adult led and child initiated activities. We identify the skills that children need and then let them practise and apply these skills in a way that is interesting and motivating to them.

Our termly topics are: All About Me, Celebrations and Traditional Tales, Heroes, Growing, Wild Animals and Under the sea. Within these topics we also look at seasonal changes. These topics are then enhanced following the lines of children's interest and developmental needs.

### Learning Journeys and Work Books

Your child's development, work and achievements will be documented in their online Learning Journey (Seesaw). These will contain observations in the form of photographs, video clips and comments. Next steps for learning are also identified for each child when appropriate. Each time an observation is uploaded you will receive a notification so that you can see what they have been doing in school. Your contributions towards Learning Journeys are very valuable and we ask that you complete



comments on what you have seen in the learning journey and record your own WOW moments onto the Learning Journey. In addition to their Learning Journey your child will also have their own work book which they will be able to share with you at our stay and play sessions or are available for you to see upon your request at any time. They will also be able to bring home any work they have completed in class such as paintings, drawings, colouring and models they have made. Seesaw will also be used for sending home weekly phonics and maths homework.

### Stay and play

Each half term we have a stay and play session (usually held from 2.30pm) where you are invited into school to see what your child has been learning and to be actively involved in some current learning such as craft activities, sharing a book or playing games with your child. We hope that these will be enjoyable experiences for you and your child.



## News

The School Newsletter will go home monthly with whole school information/events. We will also share information about what we have been learning throughout the week, any reminders, up-coming events and ideas for how you can support your child's learning and development at home through our school website and via Seesaw. Our curriculum maps on the school website show you what we will be learning each term.

## Attendance Awards

As a school we are working to improve our pupils' attendance. Children with 100% attendance over a full term and full year will receive special awards and prizes. These are given out in a special assembly which parents and carers are invited to attend. If your child is due to receive an award you will be invited into school to join in with our assembly. In addition to this the class with the highest weekly attendance receives class stickers and a trophy for the week.

## Behaviour Policy

We follow the school behaviour policy with effective rewards (including stickers, certificates and special helper roles) and sanctions (including time out, within the classroom or in another classroom).

Please inform us of any concerns about changes in your child's behaviour, so that we can investigate these thoroughly and ensure your child's happiness at school.

## School Lunch

Currently all children are entitled to free school dinners until the end of key stage 1. There is always a choice of meals and these can be looked at with your child in advance on the menu available from the school office. If your child does not wish to have a free school meal they may bring a packed lunch instead but please make sure that the lunchbox is clearly labelled with your child's name and does not contain nuts or fizzy drinks.

## Dietary/Medical Requirements

Please ensure your child's class teacher is informed of any special dietary requirements, food allergies or medical needs.



## Head Lice



Please be vigilant! These are very common in school especially among younger children and it is important that your child is treated before returning to school. Conditioner and a nit comb are the cheapest and most effective treatment for removing lice and their eggs (nits). When we are notified by a parent that there is an outbreak in class a letter will be sent home to recommend all parents check their child's hair.



## Toys

Please encourage your child NOT to bring any toys into Reception from home. We cannot be held responsible for any lost or damaged toys brought in from home.

## What can you do to help your child at home?



**Reading** - sharing books with your child for just 5 to 10 minutes each day really helps them develop their vocabulary, their experiences of the world and of course their understanding of stories. Take a few minutes to talk to your child about their favourite books. Why do they like them? Who is their favourite character? Books are also great for counting, recognising colours and shapes. As the year goes on and your child develops their understanding of phonics they will also enjoy reading their school reading book to you. Please make time each day for them to do this.

**Writing** - even before your child is ready to start writing in sentences, colouring, making patterns, painting and drawing of any kind will help your child develop the pencil control they will need to start writing; talking to your children about the sounds they hear in words and looking at letters and the sounds they make will help your child when they are ready to begin writing.



Lots of muscle building in their hands also helps with pencil grip and pressure when writing. These skills can be achieved through activities using playdough, plasticene, tweezers etc using pinching, squeezing and kneading movements.

**Counting** - this can be fitted into everyday life really easily. Count the steps as you go up or down stairs, when you're out shopping your child could help you count carrots into a bag or maybe count the cars on the street. It would also be helpful if you show your child how to count by touching each object as you say its number.



**Self-help skills** - can your child put on a pair of shoes by themselves? Or have a good go at doing up the zip on their coat? All these things improve self-confidence and independence and help develop fine motor skills (those small movements so important for learning to write).

## What does your child need at school?

**Uniform** - At Beaumont Lodge we ask all children to come to school in uniform. This uniform is White/blue t shirt/polo t-shirt, grey/black skirt, trousers or shorts and navy-blue sweatshirt / fleece. Please visit <https://uniform-direct.com/> to order uniform with the school logo. All items must be named! School cannot take responsibility for lost items.



There is also a PE uniform that needs to be followed by all children (nursery to Y6). PE kits are: a white or blue t shirt, black shorts/joggers and a black or navy jumper.

Vest tops, crop tops, jeans and hoodies are not permitted for school.

We advise children **do not** have their ears pierced during the school year as they are unable to participate in PE, Swimming or other sports events unless they can independently remove their earrings. Only stud earrings are permitted.

Please ensure pupils do not come to school wearing gel or acrylic nails, or nail polish.

**Footwear** - Children will need a pair of wellies that can stay in school all year (there will be a space in the cloakroom for these to live). We also ask for the children to keep in school a pair of 'indoor shoes'. These may be plimsolls or another pair of sensible shoes. We also ask that any shoes that the children wear for school are ones that they are able to do up and undo by themselves - **NO LACES** please!



**Book Bags** - Children will need a book bag which they should bring into school daily. It will help to keep the books in good condition and book bags are required throughout your child's time at school. These can be purchased at the school office for £5.00. Your child will be given a reading book appropriate to their level of development that will be read and changed at least weekly by an adult in school. Please try to read this book with your child each day. GoRead should be used to log your child's home reading. Your child will be given a passcode for this at the start of the year.

**Spare Clothes** - Many children have occasional accidents at school. When this happens we provide spare clothes which we ask that you wash and return as soon as possible. If your child is prone to accidents it would be very helpful to have a spare set of their own underwear, socks and trousers or skirt in school. They are likely to be less upset if they have their own clothes and it saves the worry of running out of spare clothes in school.

**'Activity Money'** - Each half term we ask for £2 to contribute towards the cost of cooking and creative materials that are not funded by the school budget. Sometimes your child will bring home what they have made but sometimes they will eat it in school.

**Waterproofs and hats** - As mentioned earlier we will use the outdoor area everyday, regardless of the weather. The children will therefore need a waterproof coat in school at all times. You are welcome to bring this in daily as we recognise this is likely to be your child's usual outdoor coat. They will also need a hat, gloves and scarf in the winter and a sun hat for hot weather. Children are not permitted to bring sun cream to school. We ask that parents apply sun cream in the morning before the start of the school day. Prescription sun glasses are permitted.



## Things to remember...

The Foundation day starts at 8:30am and ends at 3.00pm.



If you are going to be late collecting your child, you will be able to pick up your child from the school office. If you can, please let us know if you are going to be late so we can reassure your child that you are on your way.

If your child is absent for any reason, please inform the school office that morning on 0116 236 6925, stating your child's name and class, their reason for absence and when you expect them to return to school.



If your child has pierced ears, please remove them on PE days and ensure that they wear stud earrings only the rest of the time.

## Finally...

- As parents and carers you are the most influential people in your child's life and their first teachers!
- We recognise this and value any information you can share which will help us to build up a detailed picture of your child.
- Please speak to a member of staff if you have anything you wish to discuss about your child.

Thank you for taking the time to read through this information. We very much look forward to getting to know you and your child.

## Foundation Stage Team:

**Foundation Stage Co-ordinator/Reception Teacher**

Mrs Vicki Smith

**Nursery Teacher**

Ms Roop Chatterjee

**Nursery Nurses**

Mrs Nicola Dawson (Reception) & Mrs Clare Cartwright (Nursery)

**Teaching Assistants**

Mrs Clare Cockram, Miss Jenny Driver & Mr Rob Plant

***"Adults who help children to play are adults who help children to learn"***